

A



Configure Windows for foreign languages

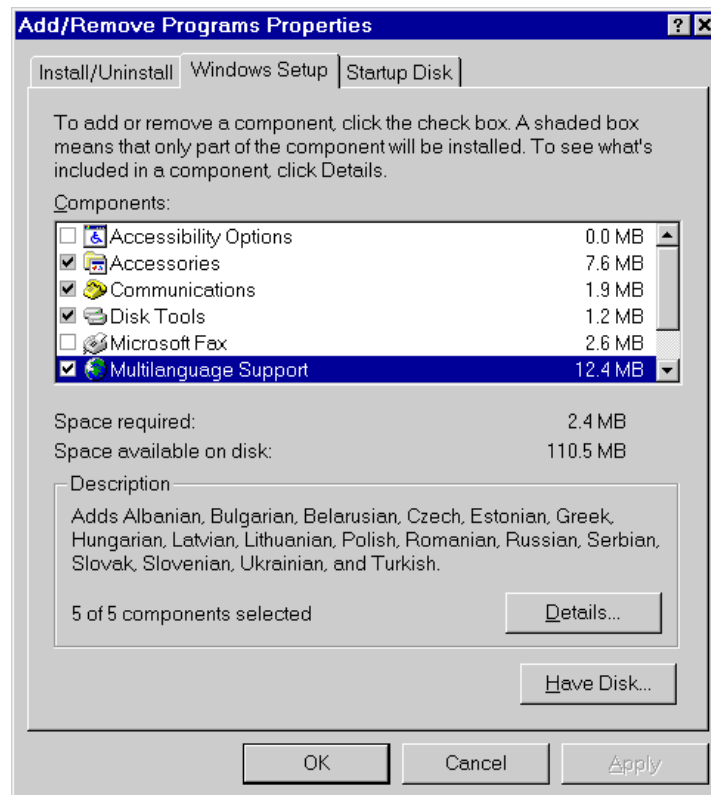
In order to view special characters and fonts specific to certain languages, it is necessary to configure Windows.

When you open a file in Word for example, you may be confronted with text which makes no sense or is a series of square symbols. Many alphabets such as Latin East European ones with special accents, or Cyrillic ones such as Russian, require you to do the following to view them properly:



Click on **Start** on the **Task Bar** and select **Settings** then **Control Panel**. Open the **Add/Remove Programs** applet by double-clicking on it.

Select the **Windows Setup** tab and make sure that **Multilanguage Support** is ticked. This will install all the languages supported by Windows on your computer. If you wish to select just a few languages, click on **Details** and tick the relevant boxes. A description appears by the **Details** button, when a particular option is highlighted.



You may be asked for the Windows CD ROM, so make sure you have it handy! To finish, restart your computer.