

A



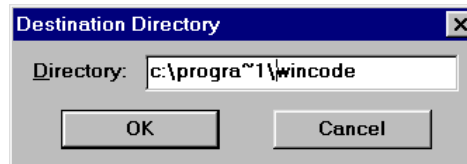
Install and configure WinCode

Guide to

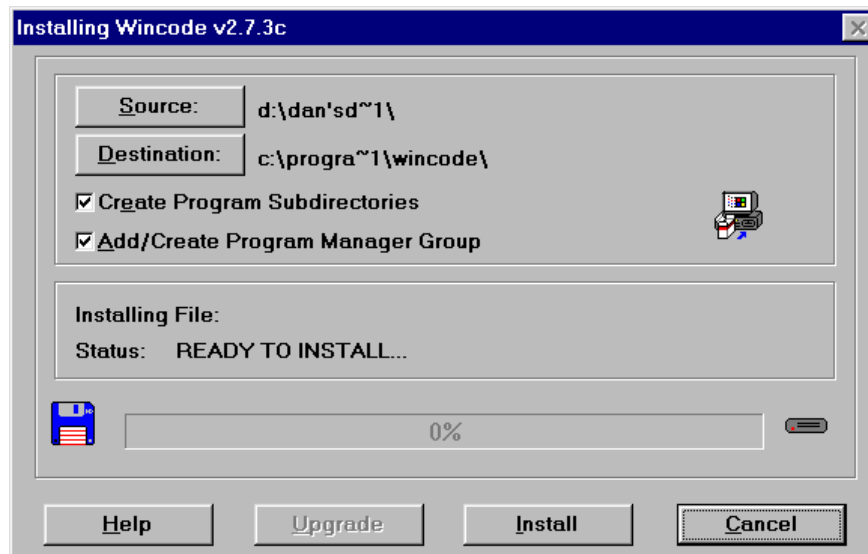
Sometimes an email you receive has its attachment included as text. WinCode allows you to separate the gobbledygook from the message and convert it back to an attachment again. This guide tells you how to install and configure it.

Copy the WinCode file to a temporary directory or folder and extract the files, usually by double-clicking on it. Now double-click on **install.exe** which installs it. When the thank you box appears, click on the **Accept** button.

You are then asked where to install the program. If you are happy to install it to **c:\wincode** then click **OK**. Later Windows users may prefer to install it to the program files folder along with their other programs. To do this you have to type **c:\progra~1\wincode** as this program is 16bit, i.e. it can also be run on Windows 3.x, and cannot cope with filenames longer than 8 characters. Click on the **OK** button.

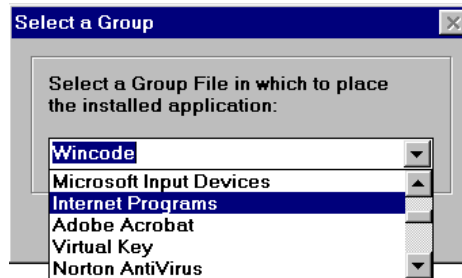


If you would again like to change the destination directory, click on **Destination:**. If you want the installation program to add an icon or shortcut to Program Manager or your Start Menu make sure **Add/Create Program Manager Group** is checked. Deselecting **Create Program Subdirectories** stops the install program from creating subdirectories where the files which are encoded and decoded are kept (more on this later). Click on the **Install** button to continue.

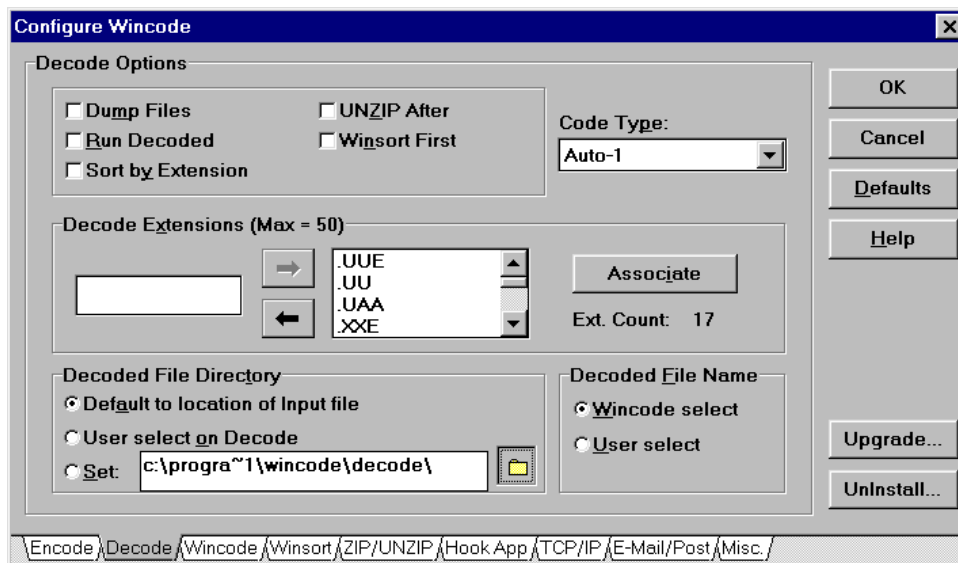


It then asks you to which Program Manager group or Start Menu folder you would like to add the icons/shortcuts. Just pressing Return creates one called **Wincode**.


The installation program should now say that the installation was successful. Click on **Exit**. If you want to read the Readme notes, click on **Yes**.



To change where the files you encode and decode are saved (the default folders \decode and \encode are within the WinCode folder you specified earlier), follow these instructions: Start WinCode and select **Options** then **Configuration** from the text menus or press **Ctrl** and **F** so that the **Configure Wincode** dialogue box appears:



You will notice that there are tabs at the bottom which you can select in order to do the configuration.

In this case **Decode** is selected. Clicking on the folder button  in the **Decoded File Directory** part of the dialogue box allows you to specify to where the files you decode are saved. Select your drive and then the relevant folder. Later Windows users should remember that your long folder names will be truncated to the first six letters with a tilde and a number 1 or more if you have more than one folder starting with the same six letters. Making this somewhere convenient, such as a folder for incoming data is recommended.

To uninstall WinCode, call up the **Configure Wincode** dialogue box and click on the **UnInstall** button and follow the instructions. Read the log file to see that the uninstall is successful. You may have to delete the Wincode directory afterwards.

WinCode is capable of doing many more things, but this is the bare minimum needed in the case of retrieving failed attachments from email messages. On instructions on how to do this, please refer to the guide: **Decoding Failed Email Attachments with WinCode**. For more details on WinCode you can go to its homepage at www.snappy-software.com.